

2245-D Lewisville Clemmons Rd | Clemmons, NC 27012
(866) 343-7223 | www.floydrunner.com

Road Runner
TOURING & TRAVEL

DISCLAIMER: Although every effort is made to ensure information is correct at press time, Road Runner Publishing does not assume and hereby disclaims any liability to any party for loss or damage caused by errors, omissions, or information outdated at the time of use.

Each of these routes are available to download as GPX and KML files, so you can use the navigation app of your choice.

Download GPS files

Floyd welcomes you with open arms and open roads. Whether you're here for the ride or the destination, offers a memorable mix of natural beauty and community spirit. Whether you're hiking, zip lining and more, Floyd recreation opportunities like hiking, zip lining and more, Floyd offers a memorable mix of natural beauty and community spirit. Whether you're hiking, zip lining and more, Floyd offers a memorable mix of natural beauty and community spirit.

ABOUT FLOYD

Floyd, Virginia is a scenic mountain town in the heart of the Blue Ridge Highlands, known for its winding back roads, perfect for motorcycle and bicycle adventures. Riders come for the breathtaking views, peaceful countryside, and charming stops along the way. Explore the area's vibrant culture with live bluegrass music, local art, unique shops, and farm-to-table dining. With outdoor Appalachian roots, and farm-to-table dining. With outdoor Appalachian roots, and farm-to-table dining. With outdoor Appalachian roots, and farm-to-table dining.



FLOYD ON 2 WHEELS

MOTORCYCLE & BICYCLE ROUTES



VIRGINIA IS FOR LOVERS

FLOYD VIRGINIA

FRANKLIN COUNTY
VIRGINIA'S SHINING GEM

RIDE FRANKLIN COUNTY
WHERE EVERY TURN TELLS A STORY

Explore Franklin County, VA, where winding mountain roads and scenic backcountry trails lead you through breathtaking Blue Ridge landscapes. Whether you're cruising on two wheels or tackling rugged terrain, adventure awaits in "Virginia's Shining Gem".

ROANOKE VALLEY HARLEY-DAVIDSON CYCLES

Experience You Can Trust

www.rvhd.com
540.562.5424

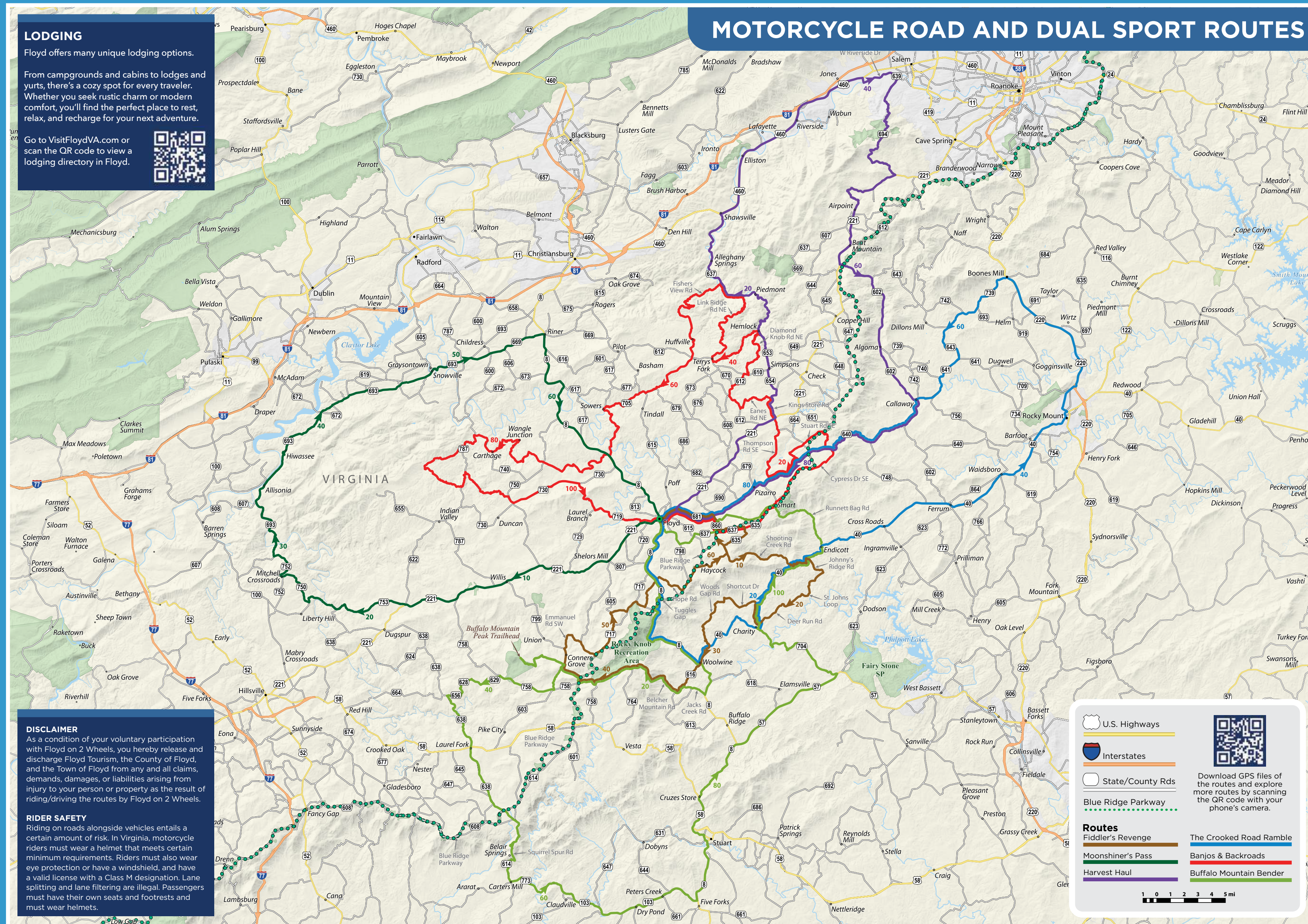
1925 Peters Creek Rd, Roanoke, VA 24017

Explore All the Trails!

Whether you're looking for a mountain biking adventure or a leisurely ride through our towns, Montgomery County has something for everyone! Explore the Poverty Creek Trail System and the newly opened Brush Mountain Park, or enjoy the beautiful scenery on the Huckleberry Trail!

BLACKSBURG CHRISTIANSBURG

GoToMontVA.com



MOUNTAIN VALOR

Empowering veterans and their families across rural Virginia

For info on benefits, resources and support:
www.mtnvalor.org

Bermann Firearm Company

Gunsmithing, Sales, Transfers, Cerakote, Laser Engraving

BermannFirearmCompany.com
540-929-1255

FRONTLINE

Salem, Virginia 540.387.8790

WWW.FRONTLINEEUROSPORTS.COM

Logos: BMW, Beta motorcycles, Indian MOTORCYCLE, TRIUMPH, DUCATI

CROOKED MOUNTAIN

CAMPGROUND - FARM - STORE - EVENTS
RIDE, CAMP, EXPLORE!

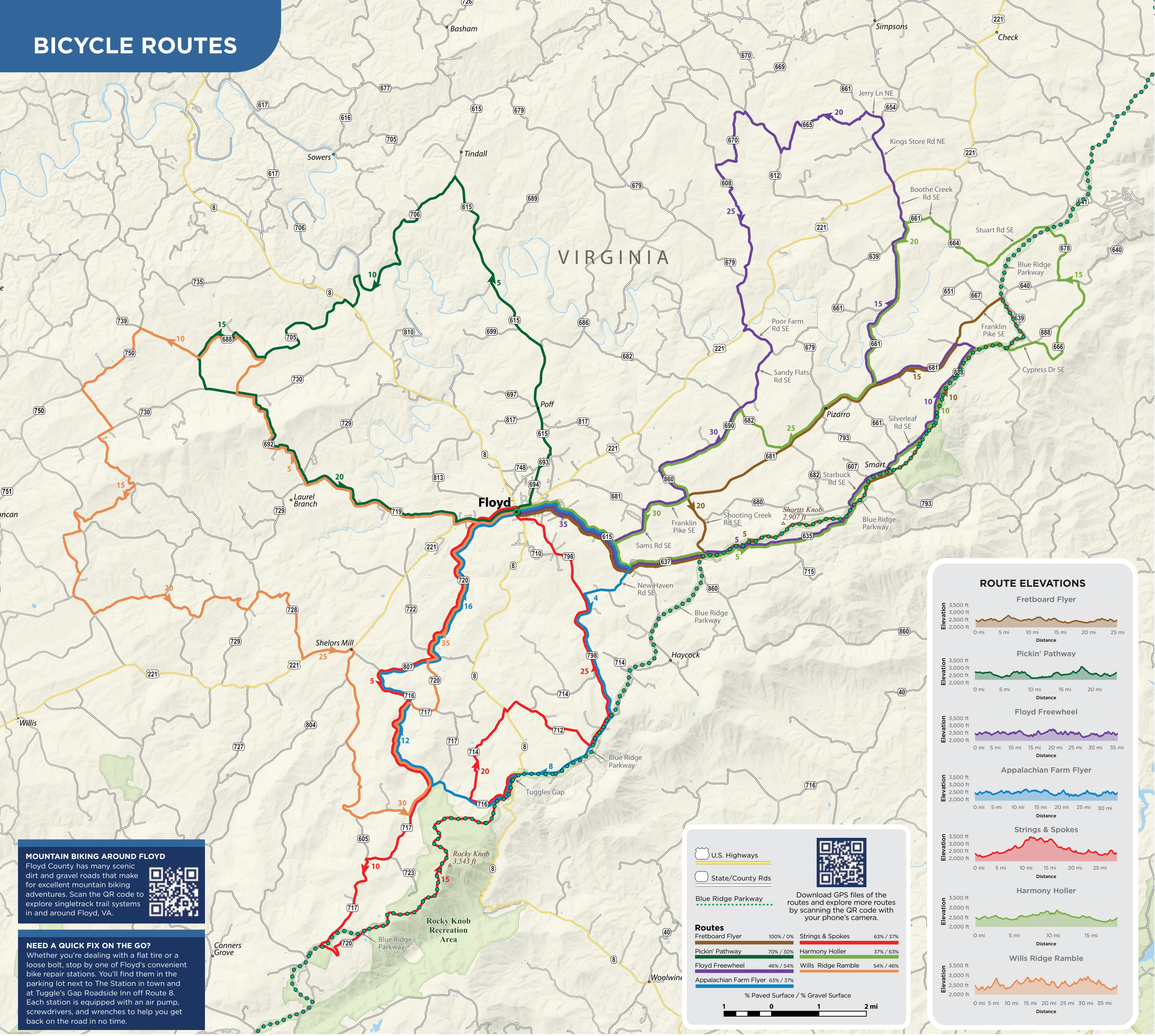
BOOK A CAMPSITE

1378 SHOOTING CREEK RD SE
FLOYD, VA 24091
WWW.CROOKEDMTN.COM
540-541-9734

2-WHEEL FRIENDLY CAMPING

Logos: CROOKED MOUNTAIN, VETRIE

BICYCLE ROUTES



MOUNTAIN BIKING AROUND FLOYD

Floyd County has many scenic dirt and gravel roads that make for excellent mountain biking adventures. Scan the QR code to explore singletrack trail systems in and around Floyd, VA.



NEED A QUICK FIX ON THE GO?

Whether you're dealing with a flat tire or a loose bolt, stop by one of Floyd's convenient bike repair stations. You'll find them in the parking lot next to The Station in town and at Tuggle's Gap Roadside Inn off Route 8. Each station is equipped with an air pump, screwdrivers, and wrenches to help you get back on the road in no time.

VISIT FLOYD, VIRGINIA

Floyd, VA is the perfect home base for your two-wheeled adventures. The Floyd on 2 Wheels routes start and finish in Floyd, VA, looping you through some of the most scenic roads in the Blue Ridge. After a day of carving curves and exploring backroads, unwind with Floyd's unique mix of lodging, dining, shopping, and outdoor recreation. Savor local flavors, craft brews, and fine wines. Browse one-of-a-kind shops and art galleries, and enjoy live music and entertainment.

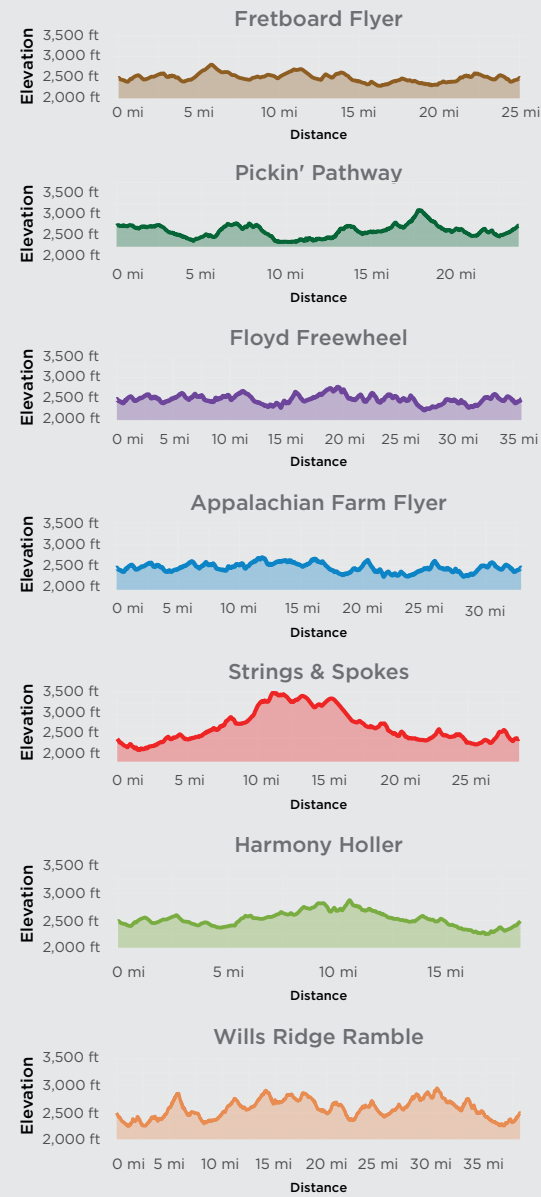
Floyd, VA—always worth the trip, and always a whole lot of fun!

PLANNING A VISIT?

Go to VisitFloydVA.com or scan the QR code to view a directory of businesses in Floyd.



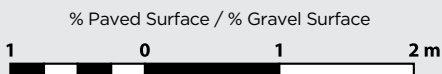
ROUTE ELEVATIONS



U.S. Highways
State/County Rds



Blue Ridge Parkway		Download GPS files of the routes and explore more routes by scanning the QR code with your phone's camera.	
Routes			
Fretboard Flyer	100% / 0%	Strings & Spokes	63% / 37%
Pickin' Pathway	70% / 30%	Harmony Holler	37% / 63%
Floyd Freewheel	46% / 54%	Wills Ridge Ramble	54% / 46%
Appalachian Farm Flyer	63% / 37%		



Before setting out on the routes, ensure your group has a safe and enjoyable experience by reviewing VDOT's recommended safety tips.

BIKE SAFETY TIPS

- Be a responsible bicyclist. Obey all traffic control devices and use proper hand signals.
- Always ride with the flow of traffic.
- Dress safely—wear a helmet, bright colored clothing, and secure loose pant legs.
- Ride defensively—anticipate the actions of other road users and watch for road hazards.
- Pass vehicles with extreme care as turning vehicles may not see you.
- Be aware of motor vehicle blind spots whether while riding or stopped at an intersection.
- Maximize your visibility at night. Wear reflective gear and add tape or lights to your bike.
- Walk your bicycle when you get into traffic situations beyond your cycling abilities.

View more safety tips at www.vdot.virginia.gov/travel-traffic/bike-ped/bike-safety/.

DISCLAIMER: Please obey all rules of the road when riding in Floyd County. As a condition of your voluntary participation with Floyd on 2 Wheels, you hereby release and discharge Floyd Tourism, the County of Floyd, and the Town of Floyd from any and all claims, demands, damages, or liabilities arising from injury to your person or property as the result of riding/driving the routes by Floyd on 2 Wheels.

Parking is available in the Town of Floyd. Scan the QR Code for more information.



VISIT THE TOWN OF FLOYD



Experience a unique blend of art, music, & outdoor recreation!

www.TownOfFloyd.org



Roanoke's community hub for your next cycling adventure.

- Sales
- Service
- Bike Rental
- Cafe

CARDINALBICYCLE.COM

BUFFALO MOUNTAIN ZIPLINES
FLOYD, VA.
Take A Ride On The Wild Side! For ages 3 and up.
Book a zipline tour at BuffaloMountainZiplines.com

Moonlight Manor Bed and Breakfast
On the Blue Ridge Parkway Between Mile Markers 170 and 171
www.moonlightmanoroffloyd.com 540-745-2080

CROOKED MOUNTAIN
CAMPGROUND - FARM - STORE - EVENTS
RIDE, CAMP, EXPLORE!
1378 SHOOTING CREEK RD SE
FLOYD, VA 24601
WWW.CROOKEDMTN.COM
540-541-9734
2-WHEEL FRIENDLY CAMPING

FLOYD FARM TRAIL
FloydFarmTrail.org
Farmers Market
Farm stores
Farm tours and stays
Vineyards and Wineries
Educational events
Concerts
U-Pick Orchards and more...