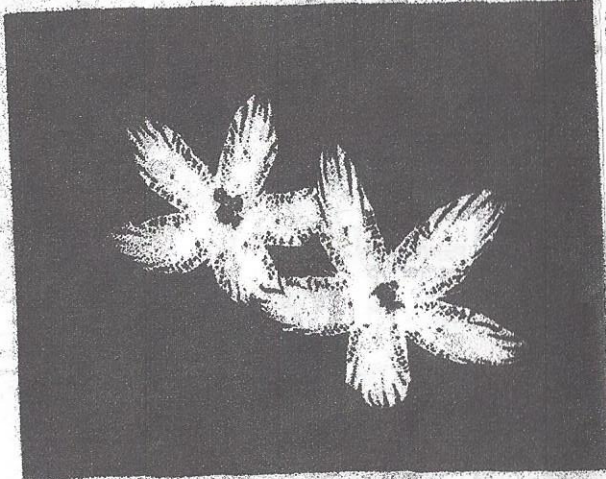


About Buffalo Mountain

Buffalo Mountain was part of a large tract of land granted to Revolutionary War hero General Henry "Lighthorse Harry" Lee as a reward for his military service. The property passed on to his sons, Charles Carter Lee and Civil War General Robert E. Lee. Charles Carter Lee built a home near the base of the mountain and his former law office, a small log cabin, still stands on an adjoining piece of land.

This 1,140-acre property was purchased with funds from the 1992 Virginia Parks and Natural Areas Bond and the Virginia Public Building Authority Bond.



Large-headed grass-of-parnasus (*Parantica grandifolia*)

The Natural Area Preserve System

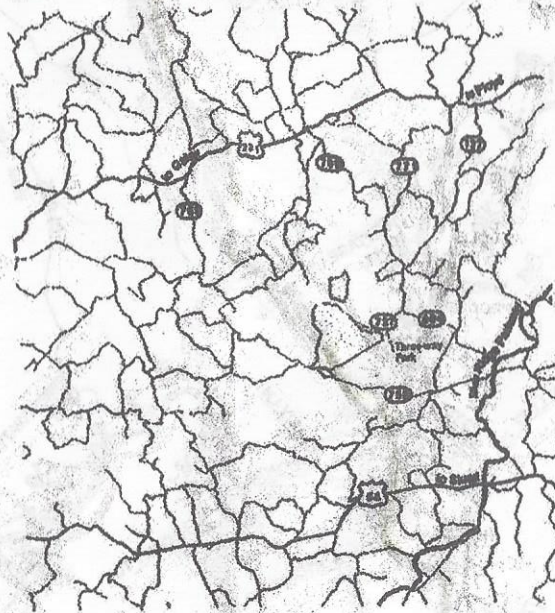
Natural Area Preserves are dedicated to protect habitat for rare and endangered plants, animals, and natural communities. There are 54 Natural Area Preserves protecting more than 45,000 acres statewide. While we provide public access at many preserves, recreation is secondary to resource protection. Preserves are open from sunrise to sunset unless otherwise posted. When you visit any preserve, please follow these guidelines so we can ensure the resources will be here for generations to come.

- No camping
- No fires
- No unleashed pets
- No bicycles, ATVs, or off-road vehicles
- No horses
- No collection of plants, animals, minerals or artifacts

Directions to Buffalo Mountain

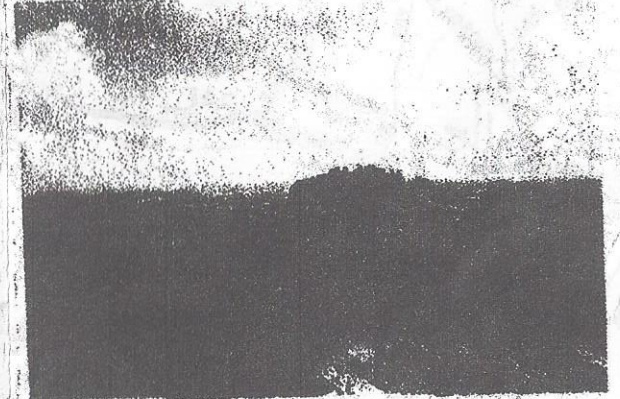
From Roanoke, follow I-81 south towards Christiansburg. Exit onto VA 8 and head south towards Floyd. At Floyd, turn right onto US 221, and follow it about 6 miles. Turn left (south) on 727 (Union School Road) and go about 4.5 miles to Conner Grove Road (VA 799). Turn right onto 799, go about 100 feet and turn left onto Moles Road (VA 727). Go about 1 mile, and turn right to stay on VA 727. Go 1 mile to a 3-way fork. Bear to the right and follow the gravel access road to the summit parking area.

From Wytheville, follow I-77 south towards Galax. Merge onto US 221 north towards Hillville/ Floyd. Follow US 221 about 15 miles to the town of Willis. Turn right onto VA 799 (Conner Grove Road). Follow VA 799 about 5 miles to VA 727. Turn right onto Moles Road (VA 727). Go about 1 mile, and turn right to stay on VA 727. Go 1 mile to a 3-way fork. Bear to the right and follow the gravel access road to the summit parking area.

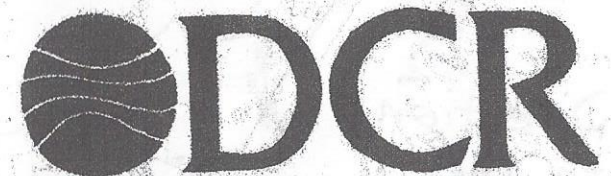


Virginia Natural Heritage Program
Department of Conservation and Recreation
252 West Main Street
Abingdon, VA 24210
(276) 676-5673
http://www.dcr.virginia.gov/natural_heritage/

Buffalo Mountain Natural Area Preserve



Buffalo Mountain summit



Virginia Department of Conservation & Recreation